

Warrington Primary Academy Trust

Governor Brochure



Tel: 01925 202 256

info@wpat.uk | www.wpat.warrington.sch.uk

Welcome to Warrington Primary Academy Trust

Thank you for your interest in volunteering in education. This brochure has been created to provide an overview of the vital roles of governors, trustees, and members within Warrington Primary Academy Trust (WPAT). Whether you are exploring ways to contribute to your local community or are already familiar with educational governance, this guide is designed to help you understand how your skills, experience, and passion can make a real difference.

Warrington Primary Academy Trust is a family of nine primary schools located across Halton, Warrington, and Cheshire West. At WPAT, we are committed to delivering high-quality education and creating opportunities for all children to succeed. Our volunteers play a crucial role in supporting school leadership, shaping strategic direction, and ensuring strong accountability.

This document is intended for individuals who are considering a governance role—be it as a school governor, a trustee on our board, or a member supporting our overarching governance structure. It outlines what each role involves, the impact you can have, and the support you'll receive as part of the WPAT community.

We hope this inspires you to join us in shaping the future of education for children in our region.

Welcome to Warrington Primary Academy Trust from the Chair of Trust

Thank you for taking time to read WPAT's Governance Brochure.

We hope this pack will equip you with some practical information, as you consider a role with us. Please do familiarise yourself with the contents of this information as it will play a key part in supporting your decision to join us in a governance role.

School governors are the largest group of volunteers in the country and your role is a very important one – good governance makes a real contribution to the quality of education our children receive. You will find that being a governor is both a rewarding and challenging role, and your personal contribution will be valued; by the local governing committee, by your school, and by the Trust.

In this brochure, you will find:

- Welcome from both our CEO and Chair of Trustees
- WPAT Governance Structure
- Our Schools Directory
- WPAT Central Services Team
- Generate Teaching Hub Team
- Links to WPAT Documents
- Role of a WPAT Governor
- Useful Web Addresses

I am proud to be the Chair of WPAT and strongly believe in our Guiding Principle and Core Values. Everyone in WPAT has a real passion for ensuring success for all our learners and is inspiring to work with. We are a successful Trust and intend to continue this journey to ensure that every child receives the best possible education and opportunities.

Alastair Brown

Chair of Trustees



Welcome to Warrington Primary Academy Trust from the CEO of the Trust

As CEO of Warrington Primary Academy Trust, I would like to welcome you to our organisation and take this opportunity to thank you for expressing your interest in becoming a school governor or trustee.

Our Trust is on an exciting journey, currently we have nine schools with plans in place to welcome more in the coming years. In summer 2021, we were successful in our bid to become a Teaching School Hub, along with one of our Warrington schools appointed as a lead in behaviour management gaining Behaviour Hub status.

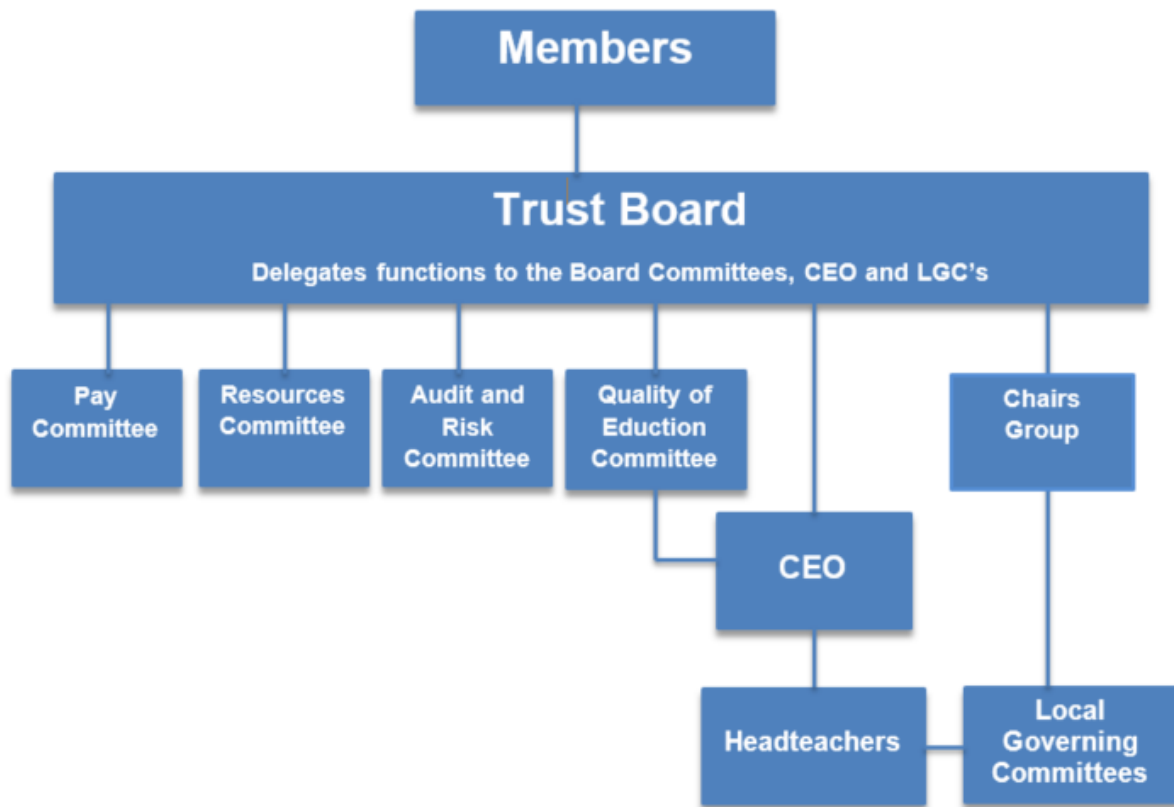
I am proud to lead this Trust, and excited about our future growth. Governors are key to ensuring that our objectives are met, and that planning for the future is both aspirational and realistic.

Louise Smith

CEO of Warrington Primary Academy Trust & Generate Teaching Hub



WPAT Governance Structure



Our School Directory

School	Address	Contact	Headteacher	Chair of Governors
Alderman Bolton Primary Academy	Longdin Street, Warrington WA4 1PW	01925 633262 aldermanbolton@wpat.uk aldermanbolton.org.uk	Sarah Morris (Executive Headteacher) Rachel Oakley (Head of School)	Debbie Wheeler
Beamony Primary Academy	O'Leary Street, Warrington WA2 7RQ	01925 630143 beamont.office@wpat.uk www.beamontprimary.co.uk	Chris Jones (Executive Headteacher)	Janet Bacon
Bruche Primary Academy	Seymour Drive, Warrington WA1 3TT	01925 815772 bruche.office@wpat.uk www.bruchepprimary.co.uk	Chris Jones (Executive Headteacher)	Matt Jones
Callands Primary Academy	Callands Road, Warrington WA5 9RJ	01925 444795 callands.office@wpat.uk https://www.callandsprimaryacademy.co.uk/	Siobhan Bentley	Nigel Spencer
Ditton Primary Academy	Liverpool Road, Widnes WA8 7HD	0151 424 5861 ditton.office@wpat.uk www.dittonprimary.co.uk	Janette Pyne	Janet Bacon
Evelyn Street Primary Academy	Evelyn Street, Warrington WA5 1BD	01925 495567 evelyn.office@wpat.uk www.evelynstreetschool.co.uk	Louise Smith (CEO of WPAT and Executive Headteacher)	Adam Lechmere
Frodsham Primary Academy	Ship Street, Frodsham Cheshire, WA6 7PZ	01928 249840 frodsham.office@wpat.uk www.frodshamprimaryacademy.co.uk	Gemma Callaghan	
Kingsway Primary Academy	Kingsway, Widnes WA8 7QS	0151 424 5031 kingsway.office@wpat.uk www.kingswayprimaryacademy.co.uk	Sarah Morris (Executive Headteacher)	
Penketh Primary Academy	Coniston Avenue, Warrington WA5 2QY	01925 723719 penketh.office@wpat.uk www.penkethprimary.co.uk	Rebecca Kayll	Julie Cahill

WPAT Central Services Team

General email: info@wpat.uk

Phone: 01925 20 22 56

Name	Role	E-mail address
Nikki Edwards	Finance and Operations Director	nedwards@wpat.uk
Vikki Hearn	Data Manager	vhearn@wpat.uk
Paul Martin	Finance Manager	pmartin@wpat.uk
Helen Davies	Business Officer	hdavies@wpat.uk
Paul Ferguson	Estates Manager	estates@wpat.uk
Ashely Babbs	Senior Administrator (Governance and Policy)	ababbs@wpat.uk
Libby Worthington	Communications Manager	lworthington@wpat.uk

Generate Teaching Hub Team

Generate was commissioned through Warrington Primary Academy Trust by the Department for Education in March 2021 to support the professional development of teachers and leaders across Halton, Warrington and Wigan.

General email: hub@wpat.uk

Phone: 07897 280 909

Name	Role	E-mail address
Bernard Clarke	Hub Director	bclarke@wpat.uk
Deb Sharples	Hub Manager	dsharples@wpat.uk
Cath O'Neill	Hub Administrator	coneill@wpat.uk
Amie Losh	Project Officer	alosh@wpat.uk
Abby Rice	School Direct Administrator	arice@wpat.uk
Linda Humphries	School Direct Manager	lhumphries@wpat.uk

Links to WPAT Documents

[Scheme of Delegation](#)

[WPAT 5 Year Strategy](#)

[WPAT School Improvement Strategy](#)

Role of a WPAT School Governor

To contribute to the work of the local governing committee in ensuring high standards of achievement for all children in school by:

1. Living by the guiding principle of the Academy Trust, owning our values of resilience, pioneering and putting the children first
2. Supporting the Headteacher and holding them to account for the educational performance of the school and its pupils
3. Overseeing curriculum provision as well as academic attainment
4. Overseeing the financial performance of the academy, feeding back to Trust and making sure its money is well spent
5. Monitoring of statutory and school level policies
6. Representing the view of the school and its stakeholders to the Trust
7. Scrutinising detailed information on pupil progress and attainment and, if necessary, challenging assumptions
8. Being aware of, and acting within our Trust's strategic work-streams, forged from our schools, produced by analysing the outputs from the collective school improvement plans and MAT capacity framework document from each of the academies
9. Carrying out panel work when required
10. Contributing to the recruitment and performance management of staff

As part of the local governing committee, a governor is expected to

- contribute to strategic discussions at local governing committee meetings which determine being a conduit, contributing to the overarching principles and ethos of the Trust on behalf of the academy
- adherence to the clear and ambitious strategic priorities and targets for the academy
- ensure that all children, including those with special educational needs, have access to a broad and balanced curriculum by holding the SLT to account
- oversee the school's budget, including expenditure of the pupil premium allocation on behalf of our Trust.

Hold the senior leadership team to account by monitoring the academies performance, by

- Agreeing the outcomes from the school's self –evaluation and ensuring they are used to inform priorities in the school development plan
- Considering all relevant data and feedback provided on request by academy leaders and external sources on all aspects of school performance
- Asking challenging questions of the headteacher and leadership team

- Ensuring senior leaders have arranged for the required audits to be carried out, reviewing the outputs
- Acting as link governors on specific issue, making relevant enquiries of the relevant staff, and reporting to the governing committee and the Trust on the progress on the relevant school priority
- Listening to and reporting to the school's stakeholders: pupils, parents, staff, the Trust and the wider community.
- Ensure that the school staff have the resources and support they require to do their jobs well, including the necessary expertise on business management, external advice where necessary, effective appraisal and CPD (continuing professional development in conjunction with the senior leadership team), and suitable premises, and that the way in which these resources are used has impact.

A governor may be required to, serve on panels of governors to assist in:

- Appointing the headteacher and other senior teaching staff
- Appraisal of the headteacher
- Set the head teacher's pay and agree the pay recommendation for other staff
- Hear the second stage of staff grievance and disciplinary matters
- Hear initial appeals about pupil exclusions

In order to perform this role well, a governor is expected to:

- Get to know the school, including visiting the school occasionally during school hours (with the head teacher's permission) and gain a good understanding of the school's strengths and weaknesses
- Attend induction training and regular relevant training and development events
- Attend meetings (full local governing committee meetings) reading all of the papers before each meeting, keeping up to date with all new information shared on the secure drive of the website
- Act in the best interests of all pupils of the academy and Trust
- Behave in a professional manner, as set down in the local governing committee's code of conduct, including acting in strictest confidence using WPAT methods of communication

The role of the governor is a strategic, not an operational one

A WPAT governor does NOT:

- a. Write school policies
- b. Undertake audits of any sort – whether financial or health and safety – even if the governor has relevant professional experience
- c. Work directly with children, they are there to overview the ambience and learning environment of the academy, by asking the staff, children and parents relevant questions on their experience of the school
- d. Fundraise- this is the role of the PfA, the governing committee should consider income streams and the potential for income generation, but not carry out fundraising tasks
- e. Undertake classroom observations to make judgements on the quality of teaching, this is done by reviewing data provided by senior staff and from external sources
- f. Do the job of the school staff- if there is not enough capacity within the paid staff team to carry out the necessary task, the governing committee need to consider and rectify this within the remit of the local governing committee and raise the situation within the trust.

This role descriptor does not cover the additional roles taken on by the chair, vice chair and chair of committees

Useful Links

Department for Education - www.gov.uk/government/organisations/department-for-education

DfE Governance Updates - www.gov.uk/government/publications/school-governance-update

Governance Handbook - www.gov.uk/government/publications/governance-handbook

NGA, all WPAT schools have gold level access - www.nga.org.uk and Learning Link for our governor training resources <https://nga.vc-enable.co.uk>

National College, training resource all WPAT schools purchase - <https://thenationalcollege.co.uk>

Ofsted - www.gov.uk/government/organisations/ofsted

SSS - www.ssscpd.co.uk/education (If your school purchases this training service)

The Key – www.schoolgovernors.thekeysupport.com (If your school purchases this service)

The Nolan Principles - <https://www.gov.uk/government/publications/the-7-principles-of-public-life>